

NEW YORK



SAIL & POWER SQUADRON



NORTH RIVER
1936

2010 SUMMER RENDEZVOUS

The New York Sail and Power Squadron is hosting its annual *Summer Rendezvous and Barbecue* on Saturday August 14th, 2010 at Miramar Yacht Club in Sheepshead Bay in Brooklyn. North River Power Squadron is a welcome participant and co-conspirator in this rite of summer.

The festivities begin at 1700 (5:00pm)

This is a great opportunity to visit with each other, meet old friends and new friends and visit with the members of Miramar Yacht Club.

RSVP BY 7 AUGUST 2010 so that we know who is coming and have enough BBQ food (vegetarian included) and libations.

- *The event is \$15 per person.*
- *Those who are coming by boat may pick up moorings for \$40, which includes launch service and overnight stay.*

To reserve your seat, return the completed tear-off form below by August 7th or email or fax your RSVP to: **Mike Friedman, Shibolet LLP, 1 Penn Plaza - Suite 2527, New York, NY 10119** (email – Mikef@shibolet.com or fax to the attention of Mike Friedman at 212-563-7108). If you RSVP by mail please include a check. Checks will also be accepted at the BBQ but you must RSVP in advance.

Reservations for Summer Rendezvous, Saturday August 14th 2010

I/We will attend. Enclosed is \$_____ for #_____ persons

Name _____

Guests _____

DIRECTIONS To Miramar Yacht Club

By Car:

From Manhattan & Downtown Brooklyn
Belt Parkway Eastbound to Knapp Street Exit 9A.
Right turn on Coyle Street to Emmons Avenue, right turn -
4 blocks to Miramar.

From Queens & Long Island

Belt Parkway westbound to Knapp Street Exit 9.
Left turn on Knapp Street to Emmons Avenue, right turn -
7 blocks to Miramar.

From New Jersey South

Goethals Bridge -> Verrazano Bridge -> Belt Parkway eastbound.
Follow directions from Manhattan & Downtown Brooklyn.

From New Jersey North

George Washington Bridge -> Major Deegan Expressway ->
Triboro Bridge -> Grand Central Parkway -> Van Wyck Expressway ->
Belt Parkway Brooklyn.
Follow directions from Queens & Long Island.

From Central Brooklyn

Ocean Avenue -> left on Emmons Avenue -> pass Nostrand Avenue. 1/2 block, right side to

Miramar.

By Bus:

B-44 Nostrand Avenue -> Walk one block to Emmons Avenue -> 3050 MYC.

By Train:

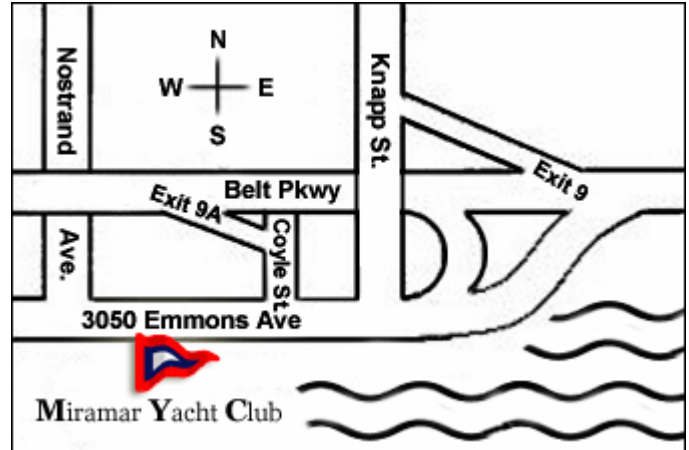
Q Local or B Express train to Sheepshead Bay Road Station.
Transfer and take the B-4 bus on Avenue Z East 16 > Nostrand Avenue stop >
Walk one block to Emmons Avenue > 3050 MYC.

From the Sea:

Rockaway Inlet Channel at Breezy Point
to Sheepshead Bay Channel
into Sheepshead Bay

From the Hudson River:

Hudson River to
Coney Island Channel at Nortons Point
to Sheepshead Bay Channel
into Sheepshead Bay

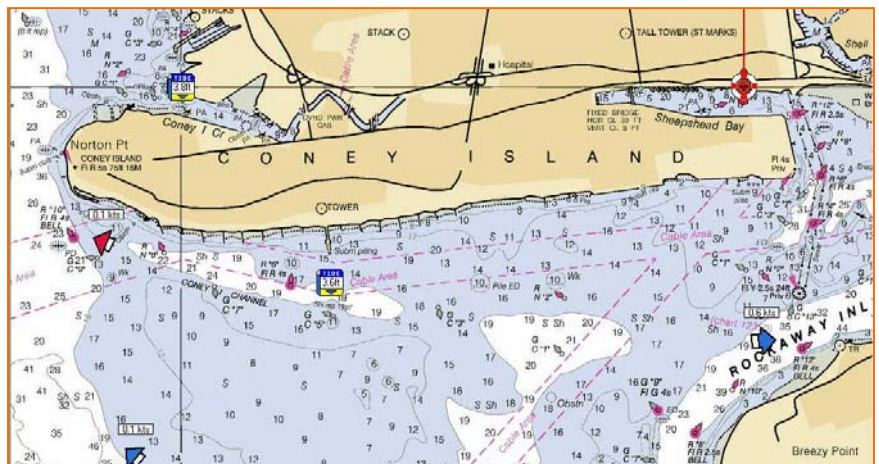


**Stay clear of Can 7
Sheepshead Bay Channel if
near low water! Shoaling
has been reported between
Sheepshead Bay Lighted
Buoy 6 (LLNR 34550) and
Sheepshead Bay Buoy 8
(LLNR 3465). Use caution
when transiting the area.**

L 40° 34.986'N

λ 073° 56.221'W

**Miramar YC is located just north of
Nun16 in Sheepshead Bay (Below)**



Miramar Yacht Club can be reached on VHF channel 68